

IQ500, Heat pump tumble dryer, 9 kg
WQ45G200GB



Outstanding laundry performance with selfCleaning condenser and autoDry for gentle and even drying of your garment.

- ✓ selfCleaning condenser: removes fluff to save you time and effort.
- ✓ Reversible drum – prevents large laundry items from tangling by alternating the drum rotation.
- ✓ autoDry – gentle and precise drying that protects your clothes.
- ✓ speedPack – Save time with our fast and highly efficient dryers.
- ✓ Half load – Your dryer adjusts its settings automatically to dry your smaller loads more efficiently

Features

Technical Data

Built-in / Free-standing: Freestanding
Removable top: No
Door hinge: Right
Length electrical supply cord: 180 cm
Dimensions: 842x598x613 mm
Weight: 55.4 kg
Fluorinated greenhouse gases: R290
Hermetically sealed equipment: Yes
EAN code: 4242003972731
Connection Rating: 600 W
Fuse protection: 10 A
Nominal power: 220-240 V
Frequency: 50 Hz
Rated capacity, in kg, for the eco programme at full load (EU 2017/1369): 9.0 kg
Energy Efficiency Class¹: C
Weighted energy consumption per cycle (EU 2017/1369): 1.10 kWh/cycle
Weighted energy consumption per 100 cycles (EU 2017/1369): 110 kWh/100 cycles
Condensation Efficiency (EU 2017/1369): 88 %
Programme duration half capacity (EU 2017/1369): 2:05
Programme duration rated capacity (EU 2017/1369): 3:15

Optional accessories

- | | |
|---------|----------------------------------|
| WZ27400 | Stacking kit with pull-out shelf |
| WZ27410 | Stacking kit |



¹ Scale of Energy Efficiency Classes from A to G

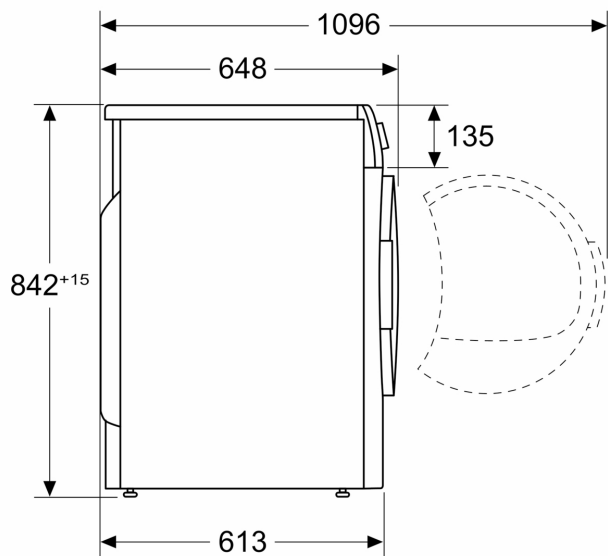
IQ500, Heat pump tumble dryer, 9 kg
WQ45G200GB

Features	
<p>Performance</p> <ul style="list-style-type: none">• Energy efficiency class¹: C• Energy²: 110 kWh• Rated Capacity³: 9 kg• Duration time³: 3:15 h:min• Noise class: B (on a scale from A to D)• Noise level³: 61 dB (A) re 1 pW• Condensation efficiency class: B (on a scale from A to D)• Condensation efficiency³: 88% <p>Programmes/functions</p> <ul style="list-style-type: none">• Standard programmes: cotton, easy care• Bed Linen Program: reduces tangling of big items thanks to reversible drum• Special programmes: cotton, shirts, Cotton Eco, lingerie, towels, pillows, mixed fabrics, outdoor, rapid 40, easy-care, wool drying in basket, timed programme warm <p>Key features</p> <ul style="list-style-type: none">• Anti crease cycle 120 min at the end of the programme• Half Load option: optimises drying for smaller loads• Touch control buttons: Iron dry, Cupboard dry, Cupboard dry+, end time delay, less ironing, low heat, buzzer, Start / Reload / Pause, 24 h end time delay <p>Additional features</p> <ul style="list-style-type: none">• SC1R• Speed• Fully electronic control dial for sensor and timed programmes• Large LED display for remaining time and 24 hours time delay, programme progress indication and special functions• Load recommendation• Usage meter: counts completed programmes• Sensitive drying: large softDry stainless steel drum system and revolution drying system• AntiVibration design: for greater stability and quietness• Wool drying basket• Drum interior light• Container for condensed water• Child Lock• End of cycle buzzer• NewValue door with cover glass, Liquid-chrome matt, black• Door hinge: right-hand• Metal door catch <p>Technical Information</p> <ul style="list-style-type: none">• Slide-under installation• Dimensions (H x W): 84.2 cm x 59.8 cm• Appliance depth: 61.3 cm• Appliance depth incl. door: 64.8 cm• Appliance depth with open door: 109.6 cm	<p>¹ At a range of energy efficiency classes from A to G</p> <p>² Weighted average energy consumption per 100 drying cycles in kWh with the Eco programme</p> <p>³ Eco programme at full load</p>

IQ500, Heat pump tumble dryer, 9 kg WQ45G200GB

Dimensioned drawings

Measurements in mm



Measurements in mm

